

## 1. The Strategic Vocabulary Matrix

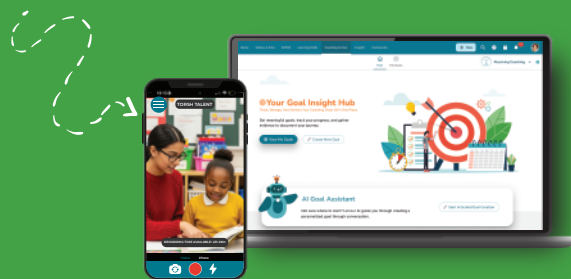
Most reviewers prioritize "Outcome-Based" language. Use this matrix to ensure your proposal aligns with modern funding mandates.

Standard Term	Strategic Outcome Term	Technical Anchor (Why It Wins)
<b>Diversity/ Inclusion</b>	Broad Societal Representation / Geographic Equity	<i>Focuses on the logistical reach of the project and the workforce as a representative demographic asset.</i>
<b>At-Risk Students</b>	High-Need / Resource-Limited Populations	<i>Focuses the "risk" on the external environment (lack of resources), meeting Title I and CCDBG criteria.</i>
<b>Bilingual Support</b>	Multilingual Asset Optimization & EL Support	<i>Directly aligns with mandates for the instruction and academic achievement of English Learners.</i>
<b>Software/ App</b>	Digital System of Record	<i>Frames TORSH as an essential tool for Measurable Accountability and federal oversight.</i>
<b>Coaching/ Mentoring</b>	Instructional Infrastructure & Implementation Fidelity	<i>Positions coaching as a verifiable, data-driven system of record rather than a subjective or "one-off" event.</i>
<b>SEL/ Soft Skills</b>	Social-Emotional & Behavioral Support for ELs	<i>Anchors the SESEBA work to the holistic development of Emergent Bilinguals in ELCs.</i>

## 2. Official Program Descriptions (Boilerplate)

### Standard Program Description (General Use)

"To ensure high-fidelity implementation of this initiative, we will utilize TORSH Talent, a secure, HIPAA/FERPA-compliant platform designed for professional observation and feedback. TORSH Talent enables a continuous 'Cycle of Inquiry' through asynchronous video coaching, allowing mentors to provide time-stamped, non-evaluative feedback that drives measurable improvement in practitioner performance." >>> **Cont.**



## 2. Official Program Descriptions (Boilerplate) (Cont.)

### Multilingual & Global Competency (Title III / NPD)

This project is designed to maximize Multilingual Asset Optimization and improve outcomes for English Learners (ELs) through the use of TORSH Talent's specialized bilingual support features. By providing educators with high-frequency, language-accessible coaching, we ensure that the instructional needs of ELs are met with precision. This approach improves Teacher Retention in high-demand bilingual roles and facilitates Cross-Linguistic Transfer for students. By documenting instructional growth via TORSH, we provide the Evidence-Based Accountability required for National Professional Development (NPD) and Title III funding, ensuring every English Learner has access to highly effective, linguistically-responsive instruction.

### Research & Behavioral Health (IDEA / Section 611)

"To ensure the Verification of Treatment Integrity, this project utilizes TORSH Talent as a System of Record. Modeled after successful research-to-practice initiatives like those at the University of Kansas Juniper Gardens, the platform allows for the remote oversight of complex behavioral interventions (such as FITBI and CW-FIT). By documenting real-world implementation via time-stamped video, we provide the Data-Informed Accountability required to satisfy federal reporting mandates for IDEA Part B and C."

## 3. The "Sustainability" & ROI Statement

**Modern grant reviewers prioritize long-term sustainability and are wary of "one-off" funding. Use this paragraph to prove long-term value.**

"Beyond the initial grant cycle, this project builds Sustainable Institutional Capacity. By utilizing TORSH Talent to create a permanent Digital Library of Exemplar Practices, we are developing an internal infrastructure for 'Train the Trainer' models. This ensures that the expertise gained during the grant period remains a permanent asset for our organization, reducing the future need for external consultants and travel-based professional development."

## 4. Technical Specs for Reviewers

- ✓ **Security:** HIPAA, FERPA, and SOC2 compliant.
- ✓ **Accessibility:** Cloud-based, mobile-friendly, and multilingual-ready.
- ✓ **Analytics:** Includes the TORSH Insights Dashboard for real-time tracking of coaching frequency, competency growth, and project milestones.

Ready to see how TORSH Talent automates the data collection and fidelity reporting grantors demand? **Click here to schedule a Demo.**